

**CCR7 Antibody**  
**Rabbit mAb**  
**Catalog # AP90382****Specification**

---

**CCR7 Antibody - Product Information**

Application	WB, IHC, ICC, IP
Primary Accession	<a href="#">P32248</a>
Reactivity	Rat
Clonality	Monoclonal

**Other Names**

Synonyms C-C CKR-7; CC-CKR-7; MIP-3 beta receptor; EB-induced G-protein coupled receptor 1; EBI1; BLR2; CD197 antigen; CDw197; Gene name Name: CCR7; CMKBR7; EBI1; EVI1;

Isotype	Rabbit IgG
Host	Rabbit
Calculated MW	42874 Da

**CCR7 Antibody - Additional Information**

Dilution	WB~~1:1000 IHC~~1:100~500 ICC~~N/A IP~~N/A
Purification	Affinity-chromatography
Immunogen	A synthesized peptide derived from human CCR7
Description	The protein encoded by this gene is a member of the G protein-coupled receptor family. This receptor was identified as a gene induced by the Epstein-Barr virus (EBV), and is thought to be a mediator of EBV effects on B lymphocytes. This receptor is expressed in various lymphoid tissues and activates B and T lymphocytes. It has been shown to control the migration of memory T cells to inflamed tissues, as well as stimulate dendritic cell maturation. The chemokine (C-C motif) ligand 19 (CCL19/ECL) has been reported to be a specific ligand of this receptor.
Storage Condition and Buffer	Rabbit IgG in phosphate buffered saline , pH 7.4, 150mM NaCl, 0.02% sodium azide and 50% glycerol. Store at +4°C short term. Store at -20°C long term. Avoid freeze / thaw cycle.

**CCR7 Antibody - Protein Information**

**Name** CCR7

**Synonyms** CMKBR7, EBI1, EVI1

**Function**

Receptor for the MIP-3-beta chemokine. Probable mediator of EBV effects on B-lymphocytes or of normal lymphocyte functions.

**Cellular Location**

Cell membrane; Multi-pass membrane protein.

**Tissue Location**

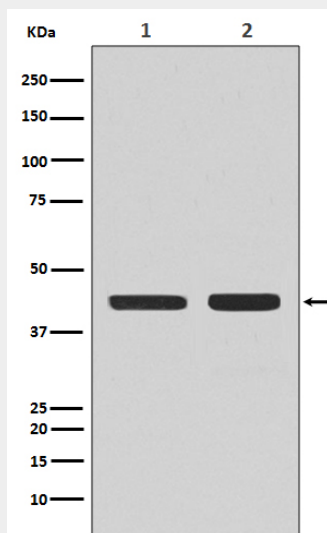
Expressed in various lymphoid tissues and activated B- and T-lymphocytes, strongly up-regulated in B-cells infected with Epstein-Barr virus and T-cells infected with herpesvirus 6 or 7

**CCR7 Antibody - Protocols**

Provided below are standard protocols that you may find useful for product applications.

- [Western Blot](#)
- [Blocking Peptides](#)
- [Dot Blot](#)
- [Immunohistochemistry](#)
- [Immunofluorescence](#)
- [Immunoprecipitation](#)
- [Flow Cytometry](#)
- [Cell Culture](#)

**CCR7 Antibody - Images**



Western blot analysis of CCR7 expression in (1) Daudi cell lysate; (2) MCF-7 cell lysate.